

257

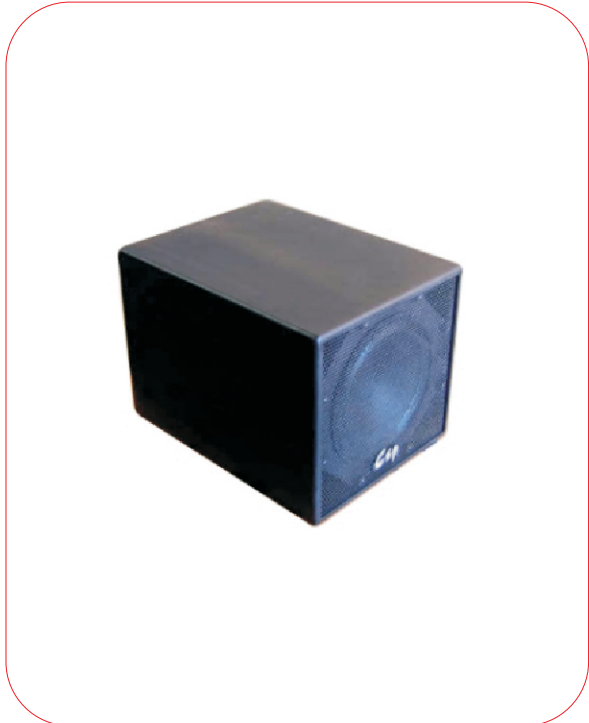
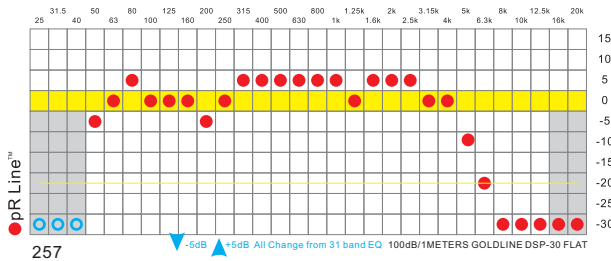
MADE IN USA.

15" Direct-Radiating Bass-Reflex Subwoofer

Professional low-key to the enjoyment of your professional

15" Direct-Radiating Bass-Reflex Subwoofer. The 255 product sound low, the low-frequency response of the solid products. the low-frequency dynamic range.

Particularly applicable to a small area produce a big low-frequency dynamic place, and supporting the use of good 289,267,277



SPECIFICATIONS:

System Type: Direct-Radiating Bass-Reflex Subwoofer	Drivers: LF (1 x Csp 15LV2i)
Frequency Range: 45 Hz - 2 kHz (-10 dB) 50 Hz - 1.8 kHz (+/-3 dB)	High Frequency Driver Protection: none
Power Capacity: 300 W Continuous 1200 W Peak	Input Connection: One two-terminal barrier strip input connectors
Recommended Power Amplifier: PaulAudio 207	Enclosure Hardware: 3/4" MDF wood, UPWE™ Special black polyurea finish
Sensitivity (1w/1m): 97 dB	Grille: 18 gauge perforated steel, additional powder coated
Maximum Output: 128.8 dB	Dimensions (H x W x D): 16.875" x 17.5" x 25" 428 mm x 444 mm x 635 mm
Nominal Impedance: 8 Ohms	Weight: 62 lbs (28 kg)
Nominal Dispersion: None	Shipping weight: 68 lbs (30 kg)
Crossover: T5r257	

APPLICATIONS:

Sound Reinforcement
Clubs, Karaoke Clubs, Health Clubs
Offices, Classrooms, Meeting Rooms
A/V Systems
Houses of Worship
Sport Facilities
Distributed Systems

FEATURES:

Lv2i Technology
High power handling - 300 watts(average) and 1200 watts(peak) power capacity
3/4" MDF wood, UPWE™ Special(Ultrachrome Protecting wood enclosures) black polyurea finish
18 gauge perforated steel, additional powder coated
Manufactured with Pride in the United States

Csp Professional
5157 Cliffwood Dr., Montclair, CA 91763 USA
info@cspopro.com
All information is Copyright © 2005 Csp

www.cspopro.com

257

Csp