

255

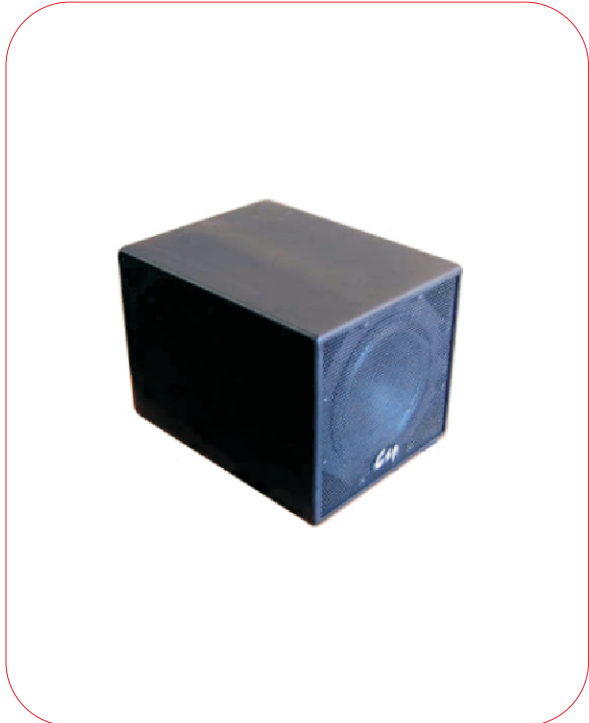
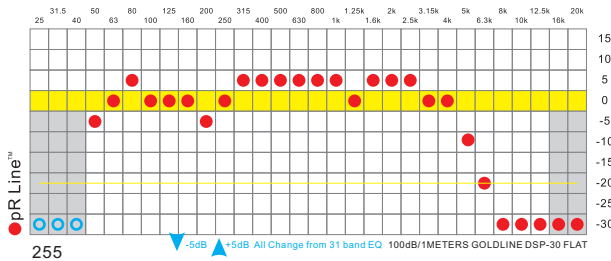
MADE IN USA.

15" Direct-Radiating Bass-Reflex Subwoofer

Professional low-key to the enjoyment of your professional

15" Direct-Radiating Bass-Reflex Subwoofer. The 255 product sound low, the low-frequency response of the solid products. the low-frequency dynamic range.

Particularly applicable to a small area produce a big low-frequency dynamic place, and supporting the use of good 288,266,277



SPECIFICATIONS:

System Type: Direct-Radiating Bass-Reflex Subwoofer	Drivers: LF (1 x Csp 15LV2)
Frequency Range: 45 Hz - 2 kHz (-10 dB) 50 Hz - 1.8 kHz (+/-3 dB)	High Frequency Driver Protection: none
Power Capacity: 300 W Continuous 1200 W Peak	Input Connection: One two-terminal barrier strip input connectors
Recommended Power Amplifier: PaulAudio 207	Enclosure Hardware: 3/4" MDF wood, UPWE™ Special black polyurea finish
Sensitivity (1w/1m): 97 dB	Grille: 18 gauge perforated steel, additional powder coated
Maximum Output: 128.8 dB	Dimensions (H x W x D): 16.875" x 17.5" x 25" 428 mm x 444 mm x 635 mm
Nominal Impedance: 8 Ohms	Weight: 62 lbs (28 kg)
Nominal Dispersion: None	Shipping weight: 68 lbs (30 kg)
Crossover: T5r255	

APPLICATIONS:

- Sound Reinforcement
- Clubs, Karaoke Clubs, Health Clubs
- Offices, Classrooms, Meeting Rooms
- A/V Systems
- Houses of Worship
- Sport Facilities
- Distributed Systems

FEATURES:

- Lv2 Technology
- High power handling - 300 watts(average) and 1200 watts(peak) power capacity
- 3/4" MDF wood, UPWE™ Special(Ultrachrome Protecting wood enclosures) black polyurea finish
- 18 gauge perforated steel, additional powder coated
- Manufactured with Pride in the United States

Csp Professional
 5157 Cliffwood Dr., Montclair, CA 91763 USA
 info@cspopro.com
 All information is Copyright © 2005 Csp

www.cspopro.com

255

Csp